



# CURRENT BID TRENDS



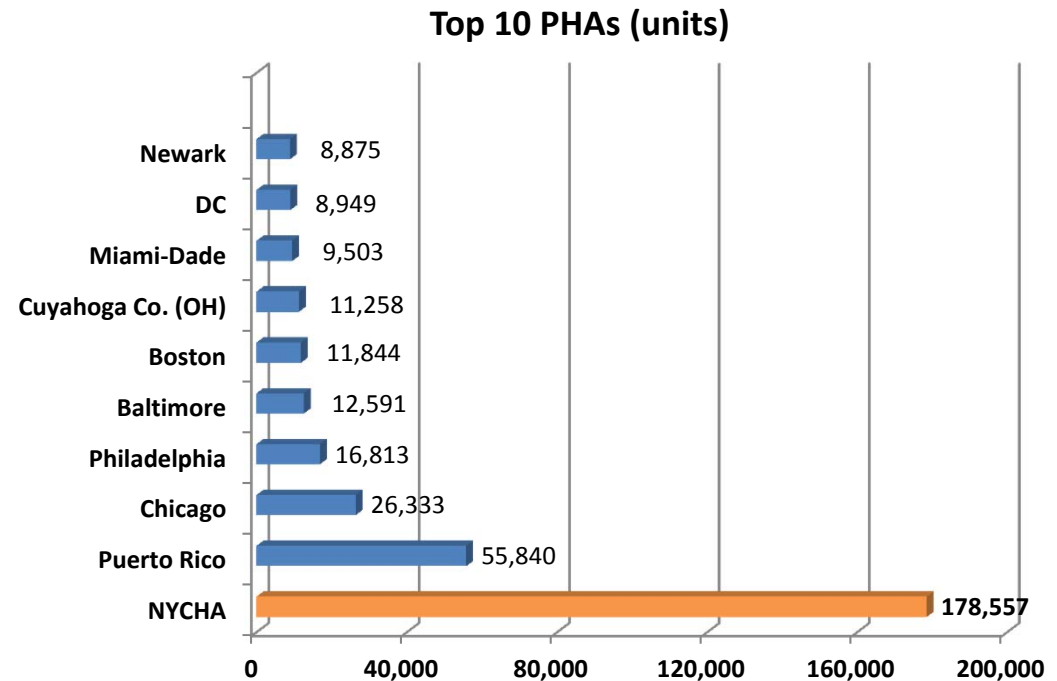


# About the Authority

**INCREASING OPPORTUNITIES FOR LOW- AND MODERATE-INCOME NEW YORKERS BY PROVIDING SAFE, AFFORDABLE HOUSING AND FACILITATING ACCESS TO SOCIAL AND COMMUNITY SERVICES**

Rank	City	Population
24	Boston	646K
25	Nashville	634K
26	Baltimore	622K
<b>27</b>	<b>NYCHA</b>	<b>615K</b>
28	Louisville	609K
29	Portland	609K
30	Las Vegas	599K

Source: US Census, Annual Estimate 2013





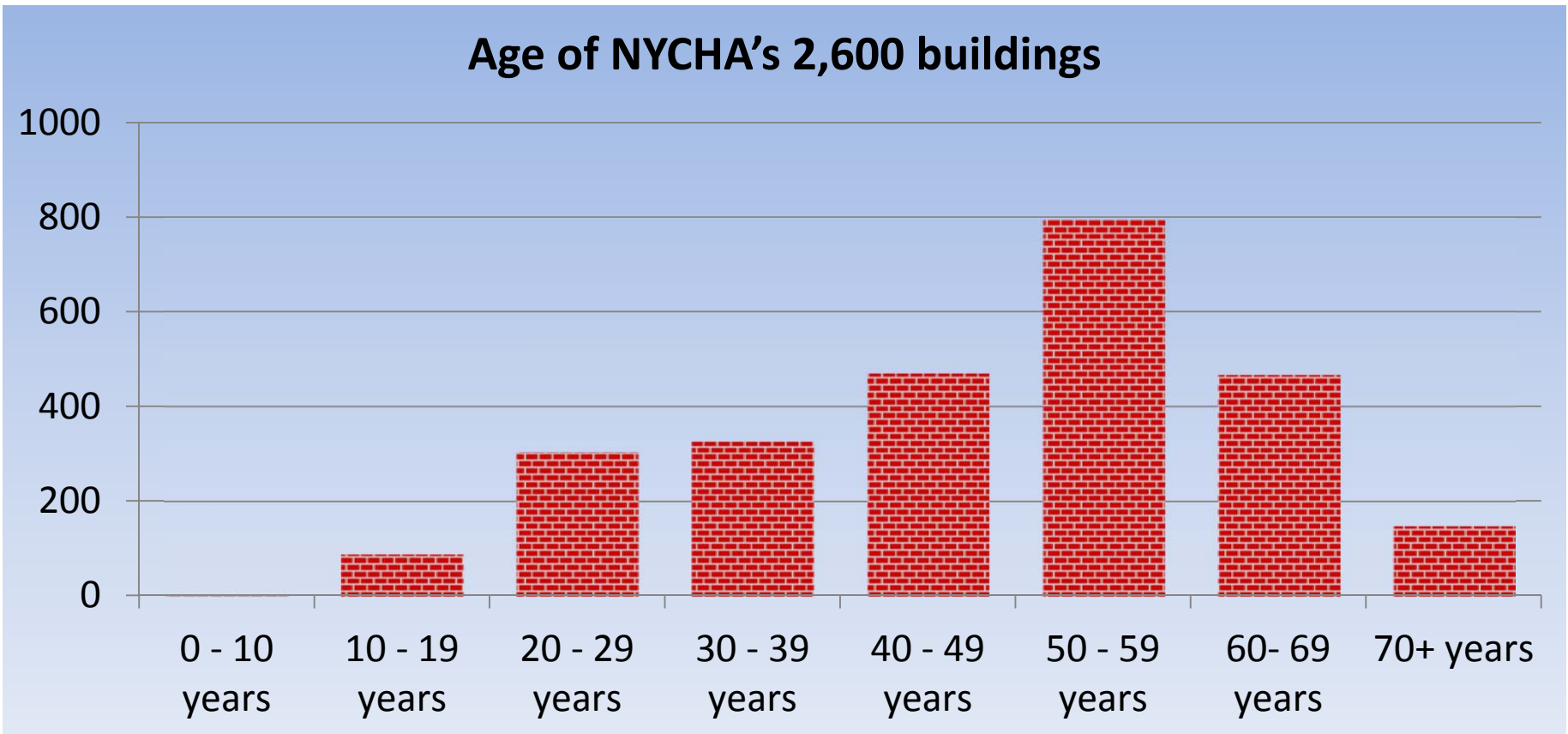
# NextGen NYCHA

---

***“LONG-TERM STRATEGIC  
PLAN THAT WILL GUIDE US IN CHANGING THE WAY WE  
DO BUSINESS AS A LANDLORD TO CREATE SAFE, CLEAN,  
AND CONNECTED COMMUNITIES”***



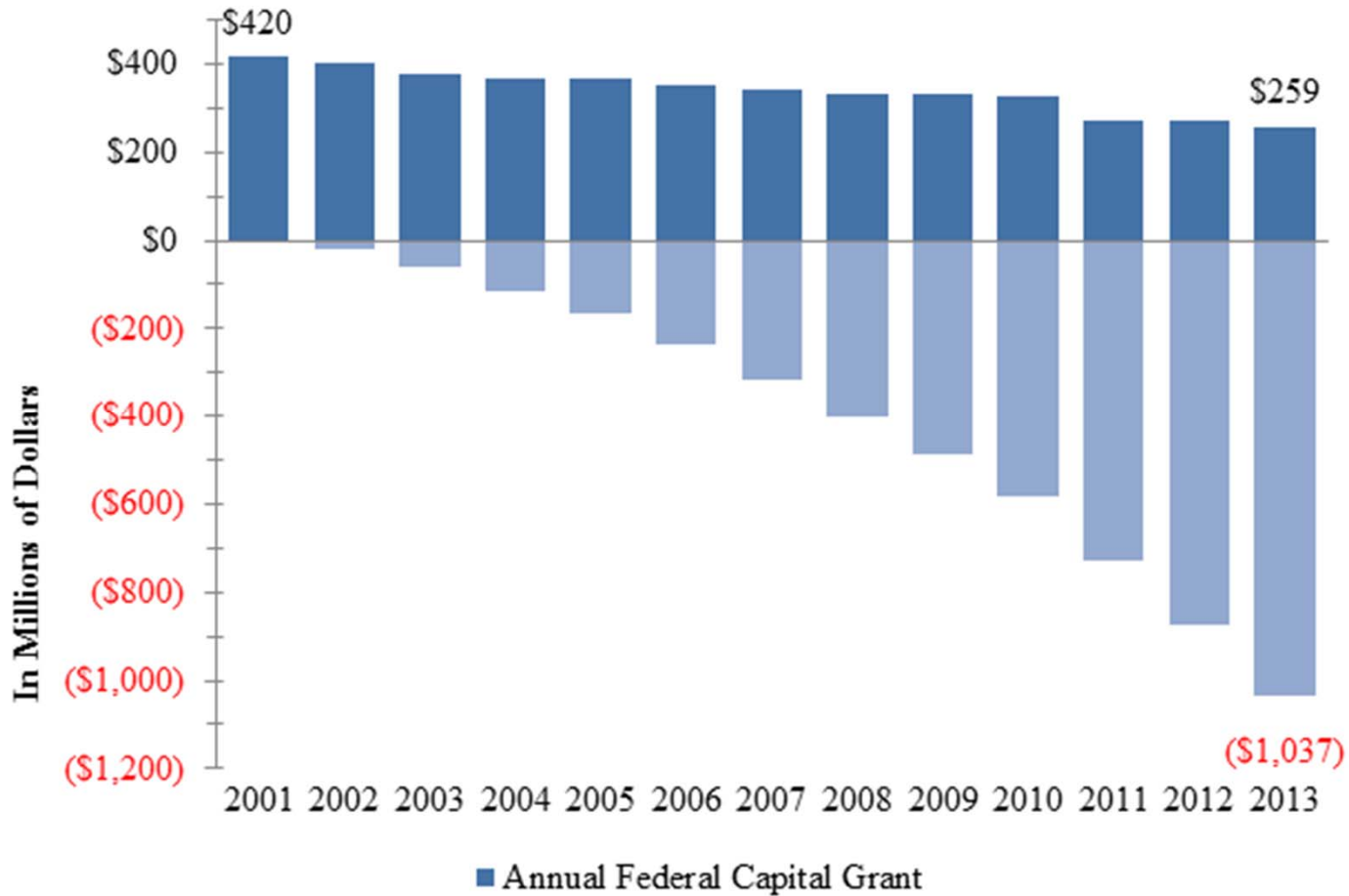
# Aging Infrastructure





# Funding Decline

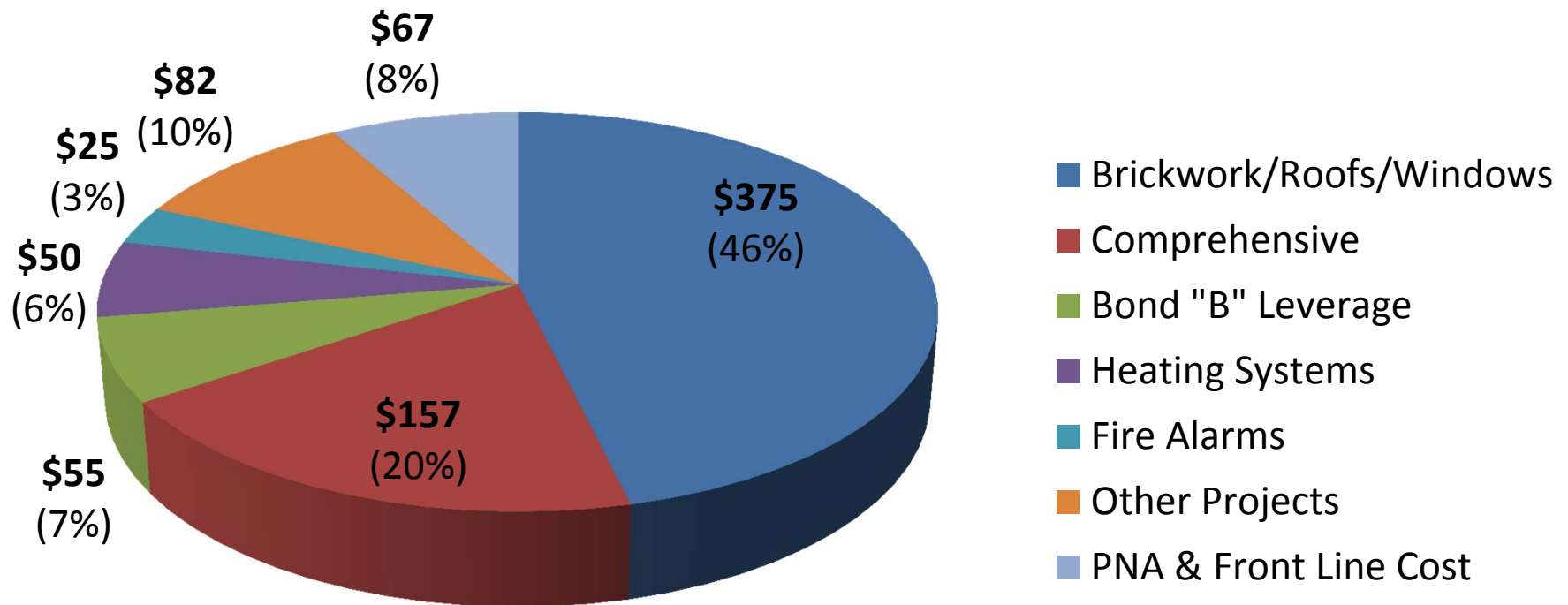
Federal Capital Funding Decline Since 2001





# Capital Plan Details

## 5 year Capital Plan - Federal



In Millions

# Additional Capital Sources

## City Capital



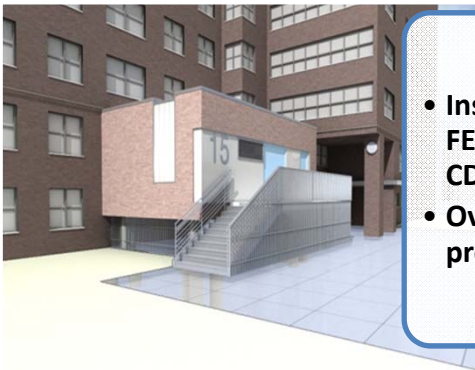
- 94 Small sponsored projects
- \$100m backlog of projects
- \$100m over 3 years for new roofs

## Mayor Action Plan



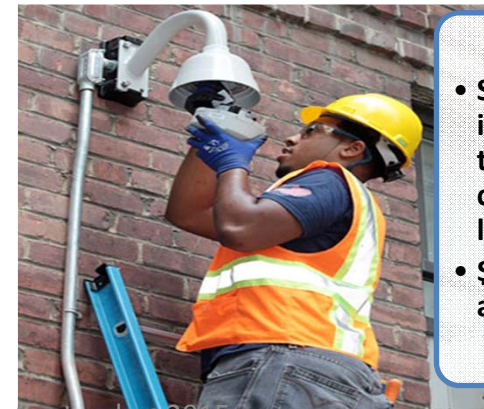
- Anti violence campaign
- \$35m in exterior lighting imp

## Sandy Recovery



- Insurance, FEMA and CDBG funds
- Over \$3B projected

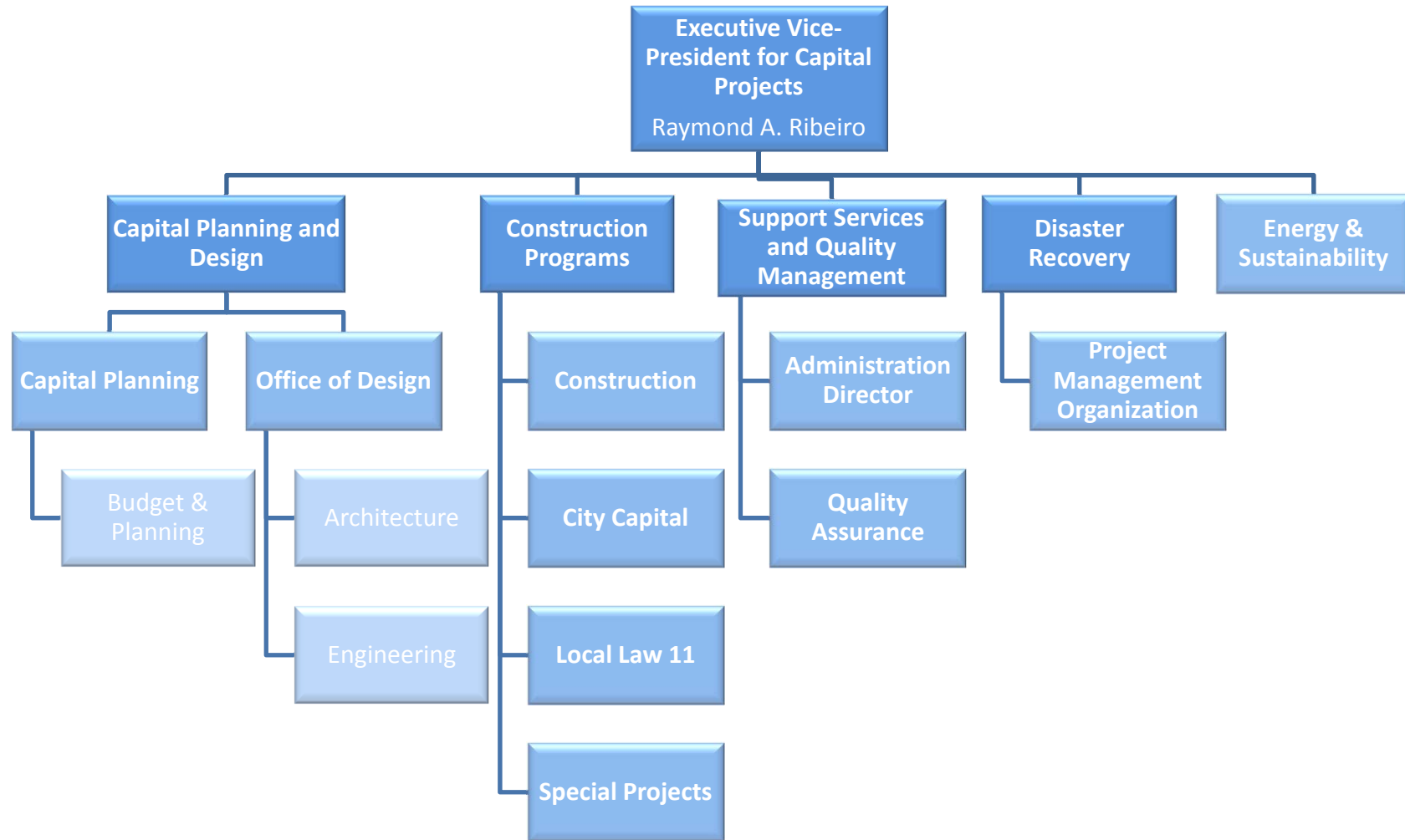
## Asset Forfeiture



- Security improvements at high crime locations
- \$100m allocation



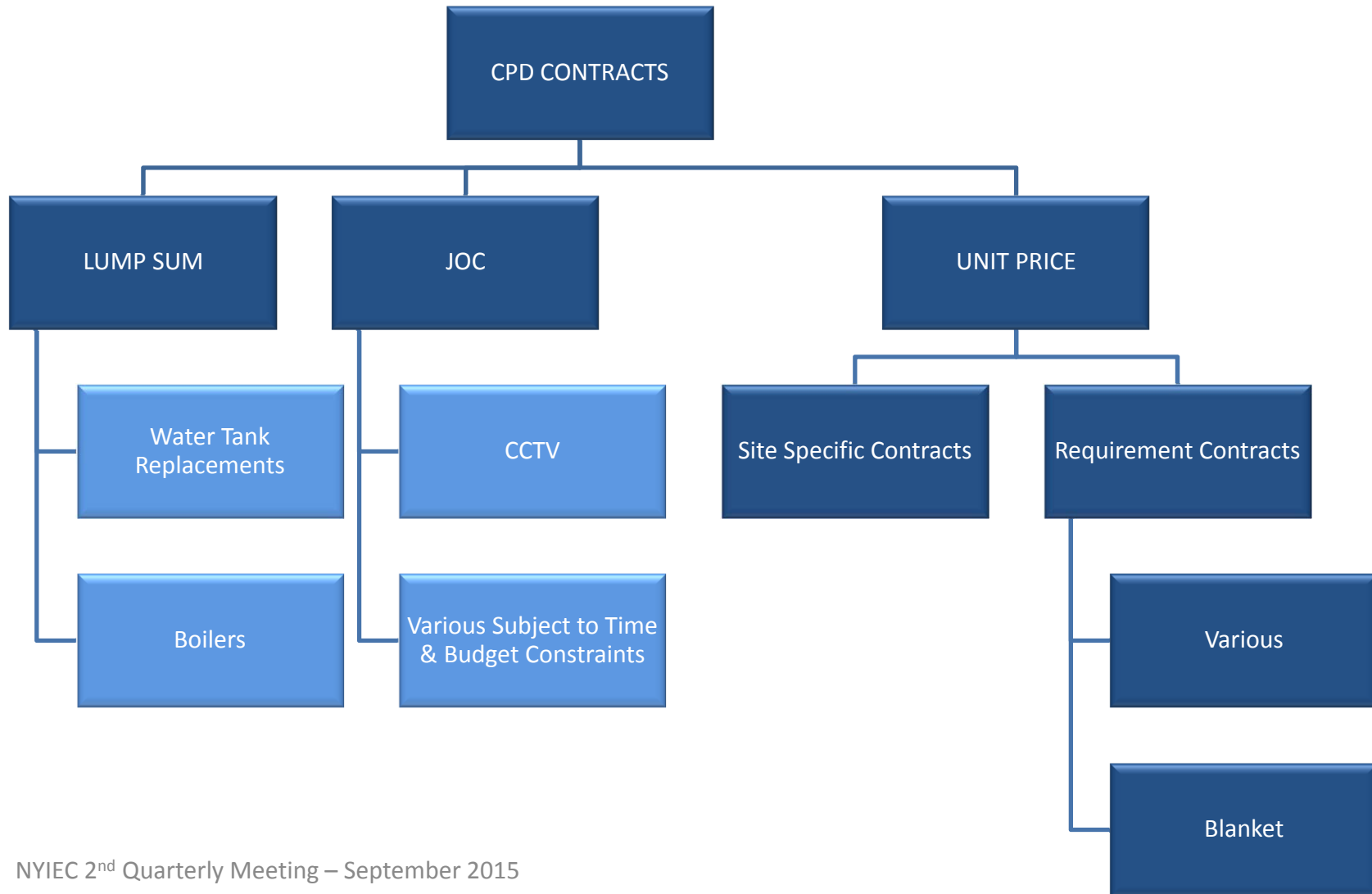
# Capital Projects Division Organization







# CPD Contracts





# Procurement of Professional Services

---

## Capital Projects Division

***“COMMITTED TO PRESERVING AND MODERNIZING PUBLIC HOUSING FOR NYCHA RESIDENTS BY PROVIDING PROFESSIONAL DESIGN AND CONSTRUCTION SERVICES EFFICIENTLY AND WITH THE HIGHEST LEVEL OF SAFETY AND QUALITY”***

- Services provided by consulting firms specializing in:
  - Architectural/Engineering
  - Façade inspections (QEWI)
  - Construction Management
  - Program Management
  - Special Inspections
  - Scheduling
  - Cost Estimating
  - Delay Claim Analysis
  - Physical Needs Assessment (PNA)



# CPD - Portfolio

---

---

## Sandy Recovery & Resiliency Program

- Over \$3B in Design and Construction

## Federally Funded Projects

- Envelope Rehabilitation (Roofs, Facades, Windows, etc.)
- Heating Plants Upgrades (Boiler Replacements, etc.)
- Building Plumbing (Gas, Water)
- Interior Renovation
- Fire Alarm & Suppression Systems
- Garbage Disposal Equipment Upgrades
- Site Infrastructure Modernization



# CPD - Portfolio

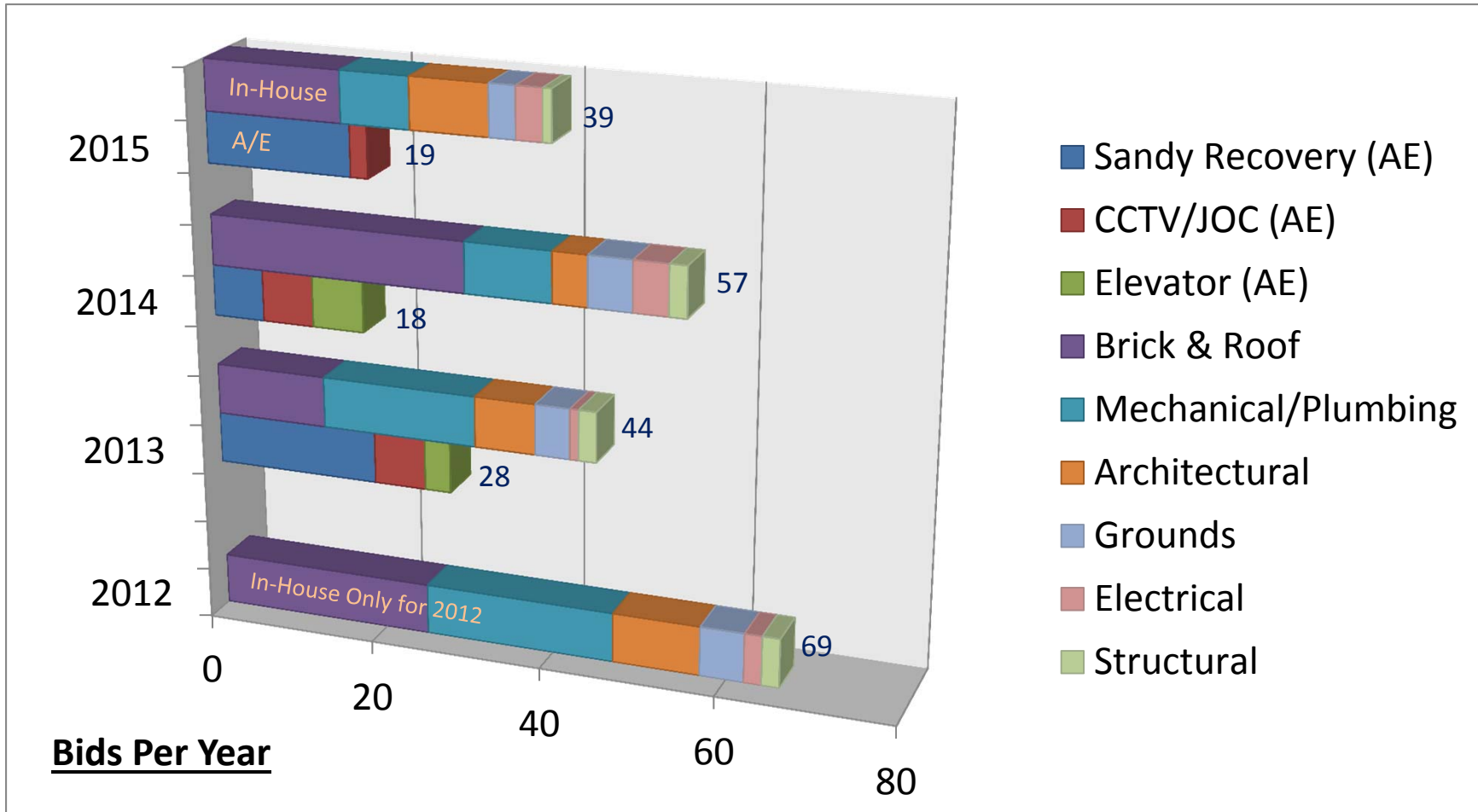
---

## City Funded Projects

- Roof Replacements
- Security Cameras and Layered Access Controls
- Extensive Exterior Lighting Upgrades
- Playgrounds, Basketball Courts, Community Center Upgrades, Entrances, etc.

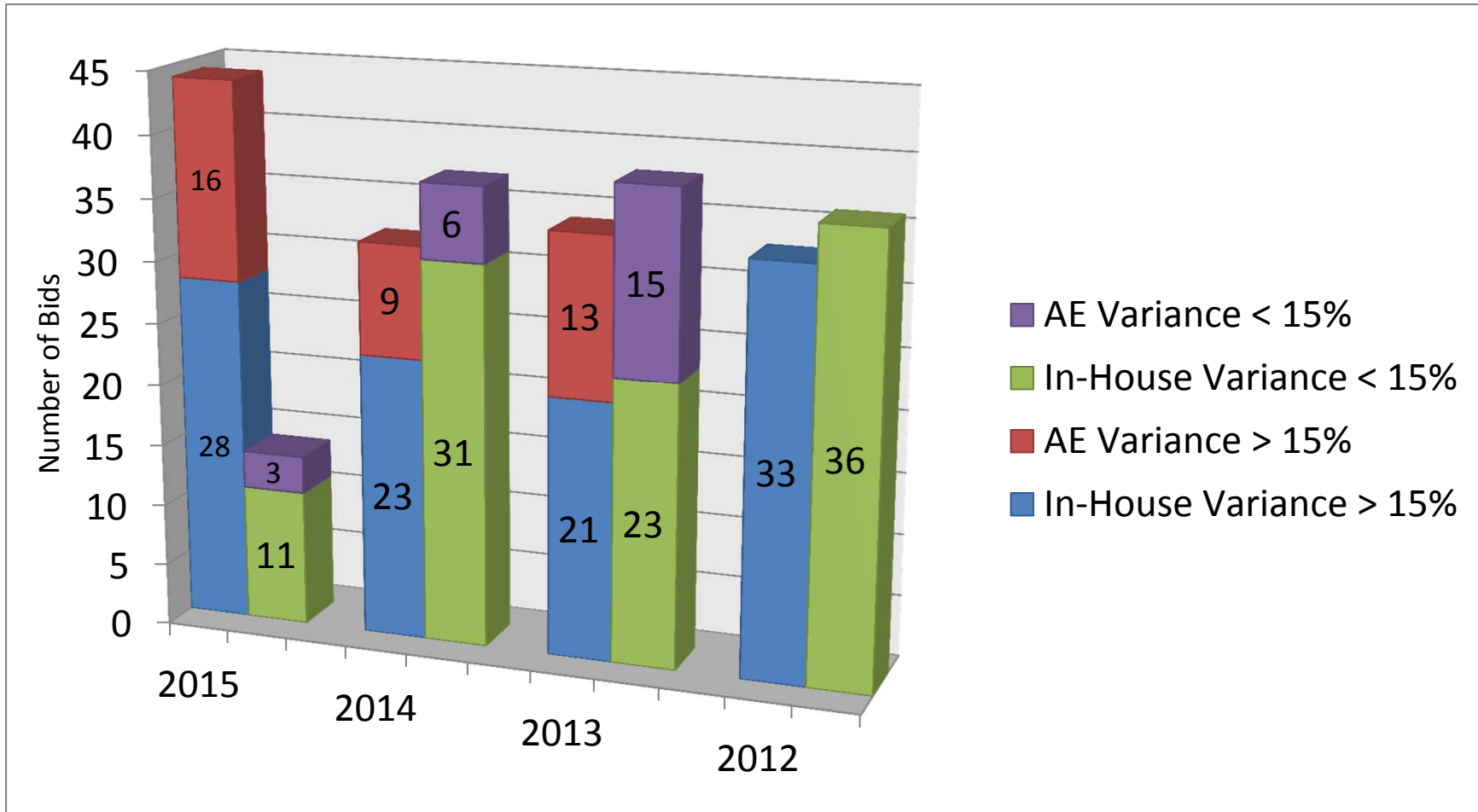


# Contract Bids 2012-2015



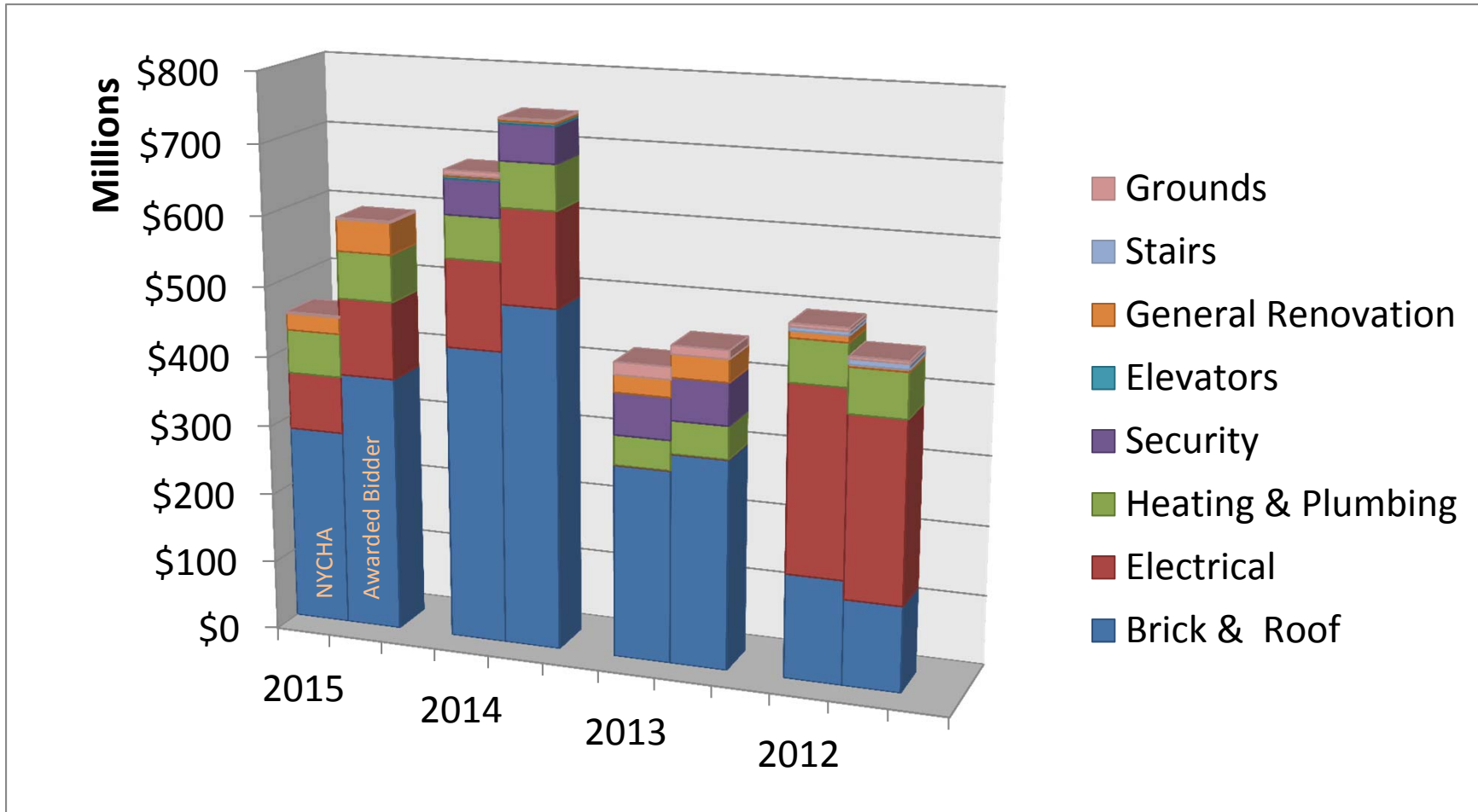


# Bid Variances By Year: In-House vs. A/E



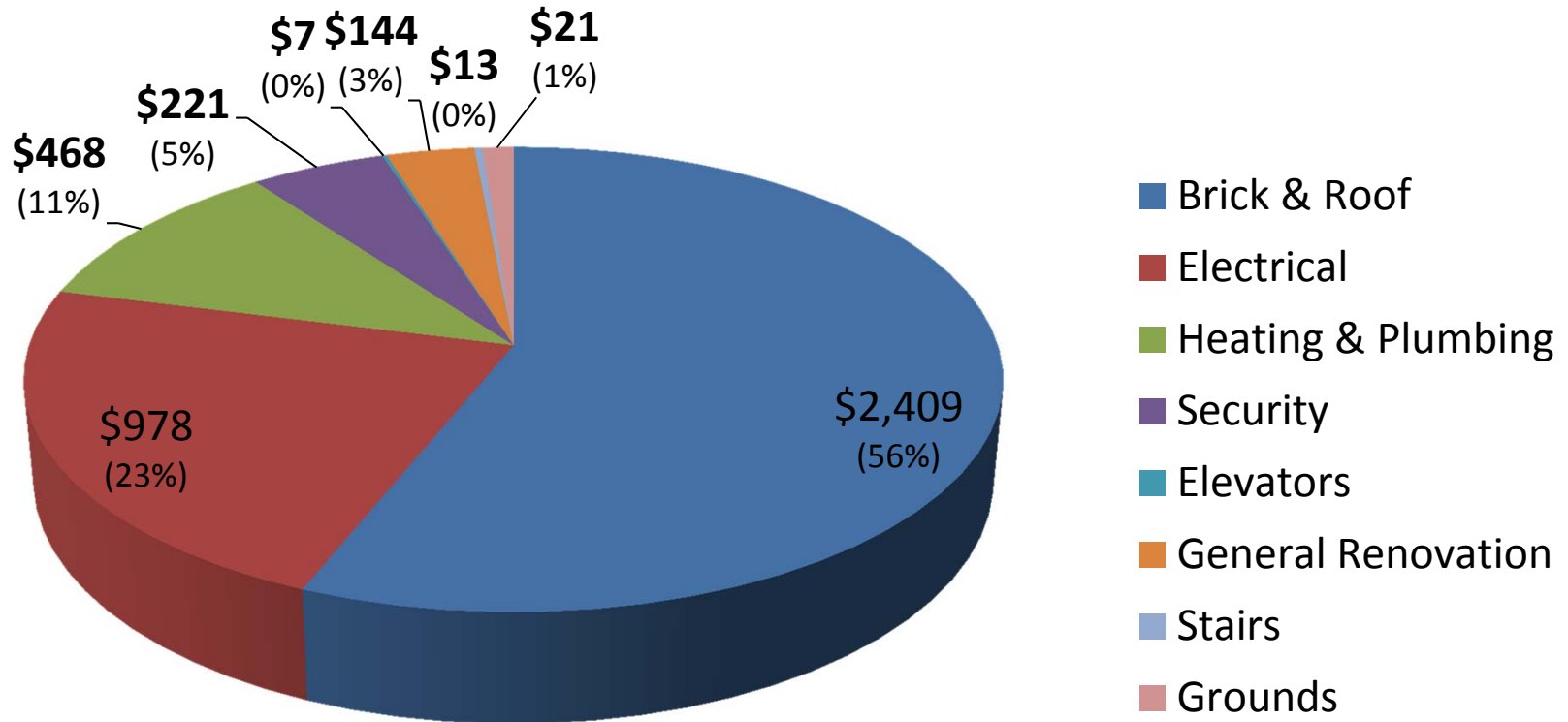


# NYCHA Estimate vs. Awarded Bidder's Estimate





# Value of Work by Type



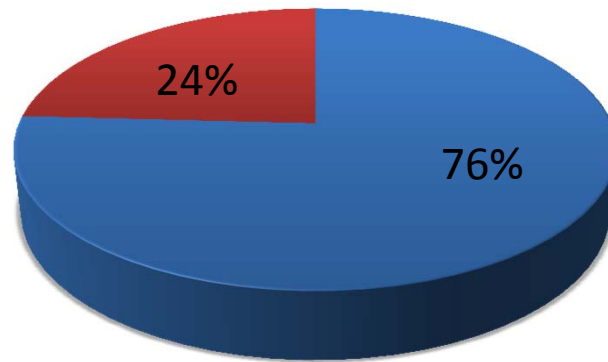
In Millions





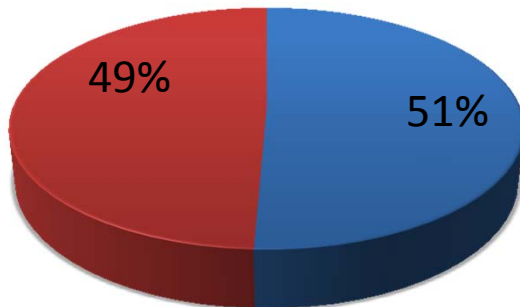
# Bid Variances Per Year

**2015**

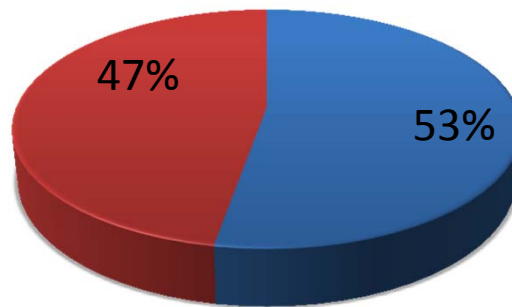


- Variance > 15%
- Variance < 15%

**2014**



**2013**



**2012**

